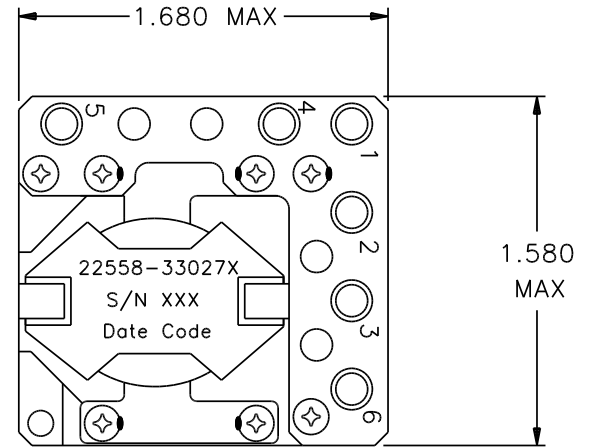
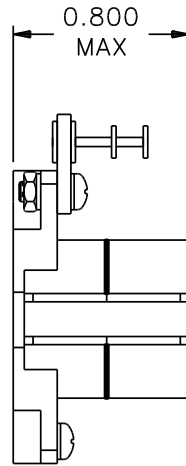


REVISIONS			
REV.	DESCRIPTION	DATE	BY



**Classification**

MIL-PRF-27 Grade: 6  
 MIL-PRF-27 Class: S (130° C)  
 Maximum Ambient Temperature: 105° C

**MIL-STD-981 Quality Assurance Provisions**

Class	Description	Drawing Number <sup>1</sup>
C	Commercial Parts	33027-30
B	Group A Inspection	33027-31B
E	Group A Inspection	33027-31S
S	Group A Inspection	33027-31S and
	Group B Inspection	33027-85

<sup>1</sup> The germane data will ship with the hardware.

LOAD CONDITIONS		
Terminals	IDC A	P = I <sup>2</sup> R W
1 - 2	1.882	0.135
3 - 4	0.584	0.023
5 - 6	0.409	0.023
PTOTAL = 0.181 W		

**Electrical Characteristics**

DC Resistance: (1 - 2) = 38 mΩ  
 (Maximum) (3 - 4) = 66 mΩ  
 (5 - 6) = 135 mΩ

Inductance (measured at 0.1V, 10 KHz):  
 Lo (1 - 2) = 215 μH ± 10% IDC = 0  
 (1 - 2) = Lo - 10% Minimum, IDC = 1.88A

Ratio and Polarity: (Ratios are verified with un-gapped core prior to assembly)

3 - 4/1 - 2 = 1.000 Nominal  
 5 - 6/1 - 2 = 0.955 Nominal

**These Parts Are Manufactured in Strict Compliance to MIL-STD-981.**

The "X" in the part number refers to the Quality Level (C, B, E or S), see Quality Assurance Provisions above.	UNLESS OTHERWISE SPECIFIED: Dimensions are in inches, and tolerances are:		<b>COAST/ACM</b>		
	Fractions	Decimals	Angles	TITLE	
	±1/64	.X = ±0.1 .XX = ±0.03 .XXX = ±0.010	±1/2°	<b>Coupled Inductor</b>	
	DRAWN BY	DATE	FSCM	DWG. NO	REV.
DO NOT SCALE DRAWING	Jim Allen	08/12/03	22558	33027X	
		SCALE: none	MAX. WT.: 60 grams	SHEET 1 OF 1	