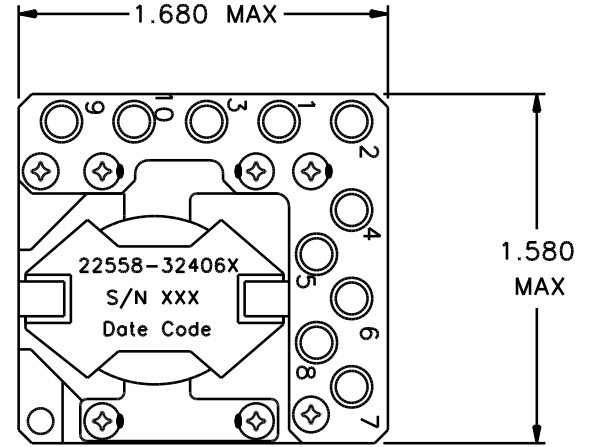
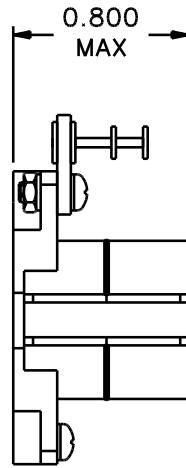


REVISIONS			
REV.	DESCRIPTION	DATE	BY



**Classification**

MIL-PRF-27 Grade: 6  
 MIL-PRF-27 Class: S (130° C)  
 Maximum Ambient Temperature: 105° C

**MIL-STD-981 Quality Assurance Provisions**

Class	Description	Drawing Number <sup>1</sup>
C	Commercial Parts	32406-30
B	Group A Inspection	32406-31B
E	Group A Inspection	32406-31S
S	Group A Inspection	32406-31S and
	Group B Inspection	32406-85

<sup>1</sup> The germane data will ship with the hardware.

**LOAD CONDITIONS**

Terminals	I <sub>DC</sub> A	P = I <sup>2</sup> R W
1 - 2	7.0	0.059
3 - 4	3.6	0.233
5 - 6	2.5	0.026
7 - 8	1.9	0.144
9 - 10	0.3	0.002
		P <sub>TOTAL</sub> = 0.464 W

**Electrical Characteristics**

DC Resistance: (1 - 2) = 1.2 mΩ (7 - 8) = 40 mΩ  
 (Maximum) (3 - 4) = 18 mΩ (9 - 10) = 24 mΩ  
 (5 - 6) = 4.2 mΩ

Ratio and Polarity: (Ratios are verified with un-gapped core prior to assembly)

1 - 2/7 - 8 = 0.333 ± 0.020  
 3 - 4/7 - 8 = 0.556 ± 0.050  
 5 - 6/7 - 8 = 0.444 ± 0.050  
 9 - 10/7 - 8 = 0.888 ± 0.050

Inductance (measured at 0.1V, 10 KHz):

(1 - 2) = 2.25 μH ± 5% I<sub>DC</sub> = 0  
 (1 - 2) = 2.10 μH Minimum, I<sub>DC</sub> = 7.0 A

**These Parts Are Manufactured in Strict Compliance to MIL-STD-981.**

The "X" in the part number refers to the Quality Level (C, B, E or S), see Quality Assurance Provisions above.	UNLESS OTHERWISE SPECIFIED: Dimensions are in inches, and tolerances are:		<b>COAST/ACM</b>		
	Fractions	Decimals	Angles	TITLE	
	±1/64	.X = ±0.1 .XX = ±0.03 .XXX = ±0.010	±1/2°	<b>Coupled Inductor</b>	
	DRAWN BY	DATE	FSCM	DWG. NO	REV.
DO NOT SCALE DRAWING	Jim Allen	02/14/03	22558	32406X	
		SCALE: none	MAX. WT.: 65 grams	SHEET 1 OF 1	