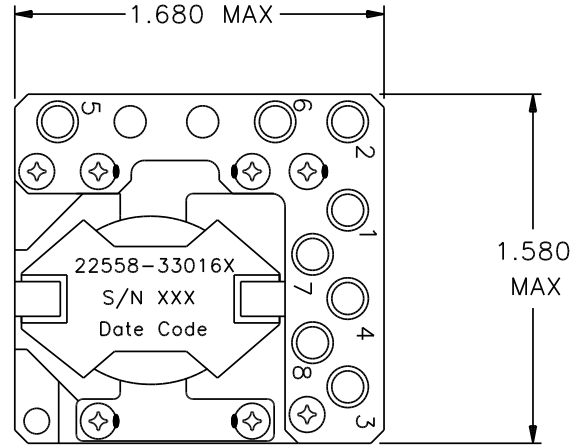
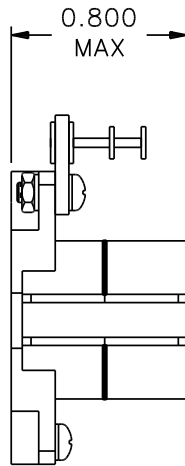


REVISIONS			
REV.	DESCRIPTION	DATE	BY



Classification

MIL-PRF-27 Grade: 6
 MIL-PRF-27 Class: S (130° C)
 Maximum Ambient Temperature: 105° C

MIL-STD-981 Quality Assurance Provisions

Class	Description	Drawing Number ¹
C	Commercial Parts	33016-30
B	Group A Inspection	33016-31B
E	Group A Inspection	33016-31S
S	Group A Inspection	33016-31S and
	Group B Inspection	33016-85

¹ The germane data will ship with the hardware.

LOAD CONDITIONS

Terminals	I _{DC} A	P = I ² R W
1 - 2	2.86	0.057
3 - 4	2.03	0.124
5 - 6	0.72	0.014
7 - 8	0.64	0.047
P _{TOTAL} = 0.242 W		

Electrical Characteristics

DC Resistance: (1 - 2) = 7.0 mΩ (7 - 8) = 115 mΩ
 (Maximum) (3 - 4) = 30 mΩ
 (5 - 6) = 27 mΩ

Ratio and Polarity: (Ratios are verified with un-gapped core prior to assembly)

1 - 2/7 - 8 = 0.421 Nominal
 3 - 4/7 - 8 = 0.684 Nominal
 5 - 6/7 - 8 = 0.526 Nominal

Inductance (measured at 0.1V, 10 KHz):

Lo (1 - 2) = 45 μH ± 10% IDC = 0
 (1 - 2) = Lo - 10% Minimum, IDC = 3.0 A

These Parts Are Manufactured in Strict Compliance to MIL-STD-981.

The "X" in the part number refers to the Quality Level (C, B, E or S), see Quality Assurance Provisions above.	UNLESS OTHERWISE SPECIFIED: Dimensions are in inches, and tolerances are:		COAST/ACM			
	Fractions	Decimals	Angles	TITLE		
	±1/64	.X = ±0.1 .XX = ±0.03 .XXX = ±0.010	±1/2°	Coupled Inductor		
	DRAWN BY	DATE	FSCM	DWG. NO	REV.	
DO NOT SCALE DRAWING	Jim Allen	08/05/03	22558	33016X		
		SCALE: none	MAX. WT.: 60 grams	SHEET 1 OF 1		