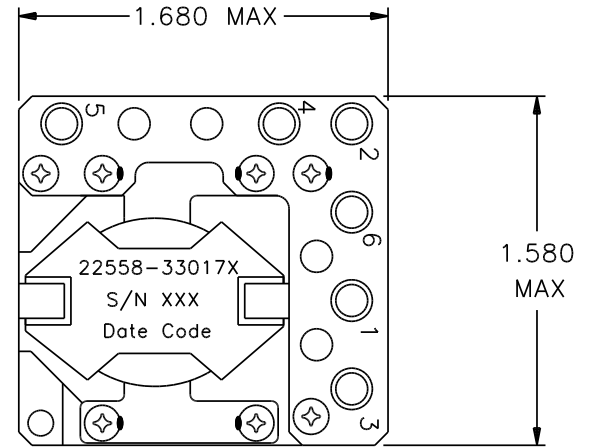
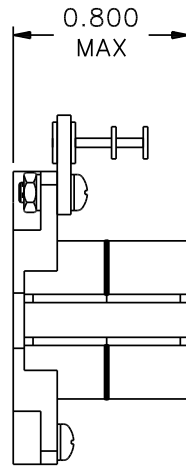


REVISIONS			
REV.	DESCRIPTION	DATE	BY



Classification

MIL-PRF-27 Grade: 6
 MIL-PRF-27 Class: S (130° C)
 Maximum Ambient Temperature: 105° C

MIL-STD-981 Quality Assurance Provisions

Class	Description	Drawing Number ¹
C	Commercial Parts	33017-30
B	Group A Inspection	33017-31B
E	Group A Inspection	33017-31S
S	Group A Inspection	33017-31S and
	Group B Inspection	33017-85

¹ The germane data will ship with the hardware.

LOAD CONDITIONS

Terminals	I _{DC} A	P = I ² R W
1 - 2	9.1	0.132
3 - 4	9.1	0.132
5 - 6	3.6	0.108
P _{TOTAL} = 0.372 W		

Electrical Characteristics

DC Resistance: (1 - 2) = 1.6 mΩ
 (Maximum) (3 - 4) = 1.6 mΩ
 (5 - 6) = 8.3 mΩ

Ratio and Polarity: (Ratios are verified with un-gapped core prior to assembly)

1 - 2/5 - 6 = 0.429 Nominal
 3 - 4/5 - 6 = 0.429 Nominal

Inductance (measured at 0.1V, 10 KHz):

Lo (1 - 2) = 2.25 μH ± 10% IDC = 0
 (1 - 2) = Lo - 15%, IDC = 9.0 A

These Parts Are Manufactured in Strict Compliance to MIL-STD-981.

The "X" in the part number refers to the Quality Level (C, B, E or S), see Quality Assurance Provisions above.	UNLESS OTHERWISE SPECIFIED: Dimensions are in inches, and tolerances are:		COAST/ACM			
	Fractions	Decimals	Angles	TITLE		
	±1/64	.X = ±0.1 .XX = ±0.03 .XXX = ±0.010	±1/2°	Coupled Inductor		
	DRAWN BY	DATE	FSCM	DWG. NO	REV.	
DO NOT SCALE DRAWING	Jim Allen	08/06/03	22558	33017X		
		SCALE: none	MAX. WT.: 60 grams	SHEET 1 OF 1		