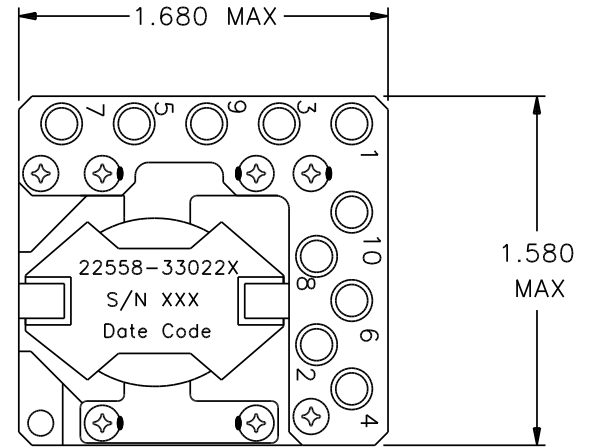
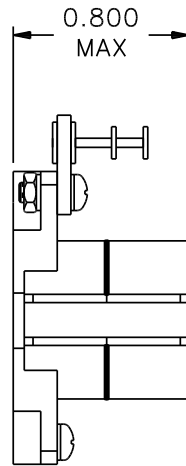


REVISIONS			
REV.	DESCRIPTION	DATE	BY



Classification

MIL-PRF-27 Grade: 6
 MIL-PRF-27 Class: S (130° C)
 Maximum Ambient Temperature: 105° C

MIL-STD-981 Quality Assurance Provisions

Class	Description	Drawing Number ¹
C	Commercial Parts	33022-30
B	Group A Inspection	33022-31B
E	Group A Inspection	33022-31S
S	Group A Inspection	33022-31S and
	Group B Inspection	33022-85

¹ The germane data will ship with the hardware.

LOAD CONDITIONS

Terminals	I _{DC} A	P = I ² R W
1 - 2	0.024	0.000
3 - 4	0.024	0.000
5 - 6	0.024	0.000
7 - 8	0.025	0.000
9 - 10	0.025	0.000
P _{TOTAL} = 0.000 W		

Electrical Characteristics

DC Resistance: (1 - 2) = 322 mΩ (7 - 8) = 383 mΩ
 (Maximum) (3 - 4) = 335 mΩ (9 - 10) = 395 mΩ
 (5 - 6) = 352 mΩ

Inductance (measured at 0.1V, 10 KHz):
 L_o (1 - 2) = 609 μH ± 10% I_{DC} = 0
 (1 - 2) = L_o - 10%, I_{DC} = 24 mA

Ratio and Polarity: (Ratios are verified with un-gapped core prior to assembly)
 1 - 2/9 - 10 = 1.000 Nominal
 3 - 4/9 - 10 = 1.000 Nominal
 5 - 6/9 - 10 = 1.000 Nominal
 7 - 8/9 - 10 = 1.000 Nominal

These Parts Are Manufactured in Strict Compliance to MIL-STD-981.

The "X" in the part number refers to the Quality Level (C, B, E or S), see Quality Assurance Provisions above.	UNLESS OTHERWISE SPECIFIED: Dimensions are in inches, and tolerances are:		COAST/ACM		
	Fractions	Decimals	Angles	TITLE	
	±1/64	.X = ±0.1 .XX = ±0.03 .XXX = ±0.010	±1/2°	Coupled Inductor	
	DRAWN BY	DATE	FSCM	DWG. NO	REV.
	Jim Allen	08/05/03	22558	33022X	
DO NOT SCALE DRAWING			SCALE: none	MAX. WT.: 65 grams	SHEET 1 OF 1