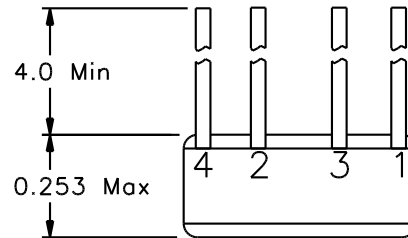
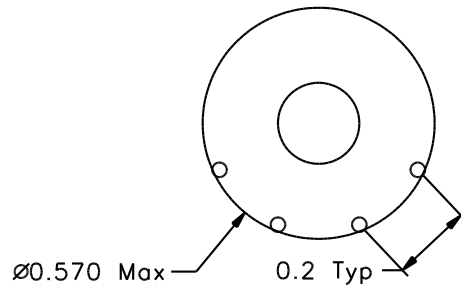


REVISIONS			
REV.	DESCRIPTION	DATE	BY

S/N XXX
 22558-33157X
 D/C



LOAD CONDITIONS
 E1-2 = 0.1V_{RMS}, 10kHz P_{TOTAL} < 0.8W

Classification

MIL-PRF-27 Grade: 6
 MIL-PRF-27 Class: S (130° C)
 Maximum Ambient Temperature: 105° C

MIL-STD-981 Quality Assurance Provisions

Class	Description	Drawing Number ¹
C	Commercial Parts	33157-30
B	Group A Inspection	33157-31B
E	Group A Inspection	33157-31S
S	Group A Inspection	33157-31S and
	Group B Inspection	33157-85

¹ The germane data will ship with the hardware.

Electrical Characteristics

DC Resistance: (1 - 2) = 125 mΩ Maximum
 (3 - 4) = 125 mΩ Maximum

Ratio and Polarity:

3 - 4/1 - 2 = 1.00 ± 0.02
 5 - 6/1 - 2 = 0.067 ± 0.002

Volt-Seconds, at 10kHz Sqr. Wave, I_{pk} = 30 mA ± 10% R_s = 20Ω:
 (1 - 2) = 57 μV-S Minimum

Note: 5 - 6 = 1 turn test winding

These Parts Are Manufactured in Strict Compliance to MIL-STD-981.

The "X" in the part number refers to the Quality Level (C, B, E, or S), see Quality Assurance Provisions above.	UNLESS OTHERWISE SPECIFIED: Dimensions are in inches, and tolerances are:		COAST/ACM		
	Fractions	Decimals	Angles	TITLE	
	±1/64	.X = ±0.1 .XX = ±0.03 .XXX = ±0.010	±5°	Common Mode Inductor	
DRAWN BY	DATE	FSCM	DWG. NO	REV.	
Jim Allen	05/24/04	22558	33157X		
DO NOT SCALE DRAWING		SCALE: none	MAX. WT.: 12 grams	SHEET 1 OF 1	