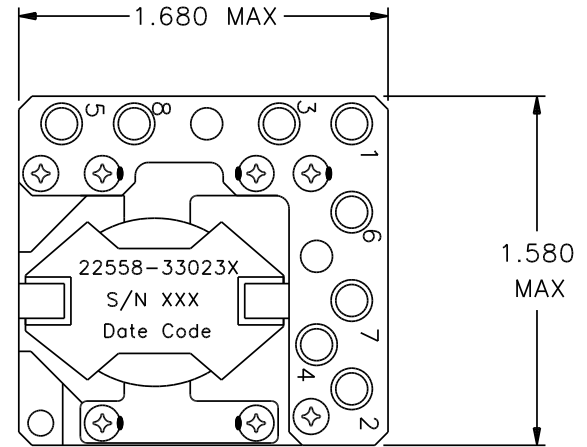
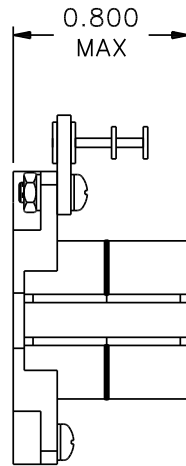


REVISIONS			
REV.	DESCRIPTION	DATE	BY



**Classification**

MIL-PRF-27 Grade: 6  
 MIL-PRF-27 Class: S (130° C)  
 Maximum Ambient Temperature: 105° C

**MIL-STD-981 Quality Assurance Provisions**

Class	Description	Drawing Number <sup>1</sup>
C	Commercial Parts	33023-30
B	Group A Inspection	33023-31B
E	Group A Inspection	33023-31S
S	Group A Inspection	33023-31S and Group B Inspection
		33023-85

<sup>1</sup> The germane data will ship with the hardware.

**LOAD CONDITIONS**

Terminals	IDC A	P = I <sup>2</sup> R W
1 - 2	2.500	0.042
3 - 4	4.100	0.087
5 - 6	0.105	0.002
7 - 8	0.770	0.122
P <sub>TOTAL</sub> = 0.253 W		

**Electrical Characteristics**

DC Resistance: (1 - 2) = 6.7 mΩ (5 - 6) = 213 mΩ  
 (Maximum) (3 - 4) = 5.2 mΩ (7 - 8) = 206 mΩ

Ratio and Polarity: (Ratios are verified with un-gapped core prior to assembly)

Inductance (measured at 0.1V, 10 KHz):

1 - 2/7 - 8 = 0.333 Nominal  
 3 - 4/7 - 8 = 0.333 Nominal  
 5 - 6/7 - 8 = 1.000 Nominal

Lo (1 - 2) = 13.5 μH ± 10% IDC = 0  
 (1 - 2) = Lo - 10% Minimum, IDC = 2.5A

**These Parts Are Manufactured in Strict Compliance to MIL-STD-981.**

The "X" in the part number refers to the Quality Level (C, B, E or S), see Quality Assurance Provisions above.	UNLESS OTHERWISE SPECIFIED: Dimensions are in inches, and tolerances are:		<b>COAST/ACM</b>			
	Fractions	Decimals	Angles	TITLE		
	±1/64	.X = ±0.1 .XX = ±0.03 .XXX = ±0.010	±1/2°	<b>Coupled Inductor</b>		
	DRAWN BY	DATE	FSCM	DWG. NO	REV.	
DO NOT SCALE DRAWING	Jim Allen	08/18/03	22558	33023X		
		SCALE: none	MAX. WT.: 65 grams	SHEET 1 OF 1		