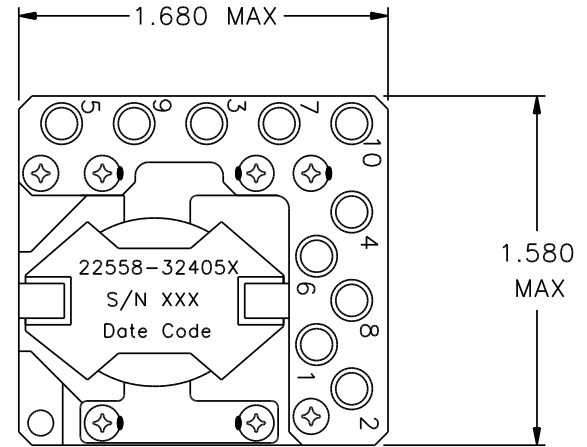
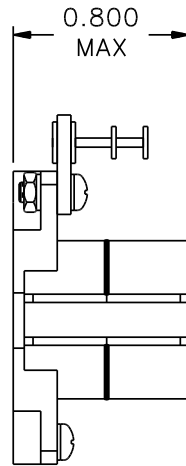


REVISIONS			
REV.	DESCRIPTION	DATE	BY



Classification

MIL-PRF-27 Grade: 6
 MIL-PRF-27 Class: S (130° C)
 Maximum Ambient Temperature: 105° C

MIL-STD-981 Quality Assurance Provisions

Class	Description	Drawing Number ¹
C	Commercial Parts	32405-30
B	Group A Inspection	32405-31B
E	Group A Inspection	32405-31S
S	Group A Inspection	32405-31S and
	Group B Inspection	32405-85

¹ The germane data will ship with the hardware.

LOAD CONDITIONS

Terminals	IDC A	P = I ² R W
1 - 2	6.3	0.159
3 - 4	1.5	0.128
5 - 6	0.13	0.001
7 - 8	0.14	0.001
9 - 10	0.04	< 0.001
		P _{TOTAL} = 0.289 W

Electrical Characteristics

DC Resistance: (1 - 2) = 4.0 mΩ (7 - 8) = 81 mΩ
 (Maximum) (3 - 4) = 71 mΩ (9 - 10) = 16 mΩ
 (5 - 6) = 75 mΩ

Inductance (measured at 0.1V, 10 KHz):
 (1 - 2) = 9.0 μH ± 10% IDC = 0
 (1 - 2) = 7.3 μH Minimum, IDC = 6.3A

Ratio and Polarity: (Ratios are verified with un-gapped core prior to assembly)

1 - 2/3 - 4 = 0.273 Nominal
 5 - 6/3 - 4 = 0.591 Nominal
 7 - 8/3 - 4 = 0.591 Nominal
 9 - 10/3 - 4 = 0.273 Nominal

These Parts Are Manufactured in Strict Compliance to MIL-STD-981.

The "X" in the part number refers to the Quality Level (C, B, E or S), see Quality Assurance Provisions above.	UNLESS OTHERWISE SPECIFIED: Dimensions are in inches, and tolerances are:		COAST/ACM		
	Fractions	Decimals	Angles	TITLE	
	±1/64	.X = ±0.1 .XX = ±0.03 .XXX = ±0.010	±1/2°	Coupled Inductor	
	DRAWN BY	DATE	FSCM	DWG. NO	REV.
DO NOT SCALE DRAWING	Jim Allen	05/21/03	22558	32405X	
		SCALE: none	MAX. WT.: 65 grams	SHEET 1 OF 1	